

Transport for NSW

Construction is starting

Community update | Summer 2022

The M6 Stage 1 will connect President Avenue at Kogarah to the M8 at Arncliffe via a four kilometre tunnel, linking southern Sydney to the wider motorway network.

Construction is starting along President Avenue and Princes Highway

Work is due to begin shortly on President Avenue, Princes Highway and West Botany Street to upgrade the road network leading into and out of the M6 Stage 1 tunnels.

These roadworks will include:

- upgrading the intersection at Princes Highway and President Avenue to improve capacity
- constructing entry and exit ramps from President Avenue to the tunnels
- widening sections of President Avenue to three lanes in each direction, and
- additional right and left turn lanes on President Avenue and Princes Highway

The map below shows the changes that will be in place by late 2025.

In early March a number of traffic changes on President Avenue and Princes Highway will be progressively implemented. These include removing parking lanes along President Avenue between Princes Highway and O'Connell Street for the duration of the work.

President Avenue between West Botany Street and O'Neill Street will be raised by three metres at the highest point to facilitate the new intersection at the entry and exit of the tunnels. Whilst the team is constructing one side of President Avenue, traffic lanes will be shifted to the other side of the road. The number of lanes in each direction will remain the same.



An artist's impression of the final road design along President Avenue and Princes Highway

Tunnelling is starting at Arncliffe

Tunnelling is about to start from the Arncliffe site on Marsh Street. The tunnelling team will use roadheaders, as shown in the picture below, to excavate the two four kilometre road tunnels, cross passages (which will provide emergency access from one tunnel to the other) and other support tunnels.

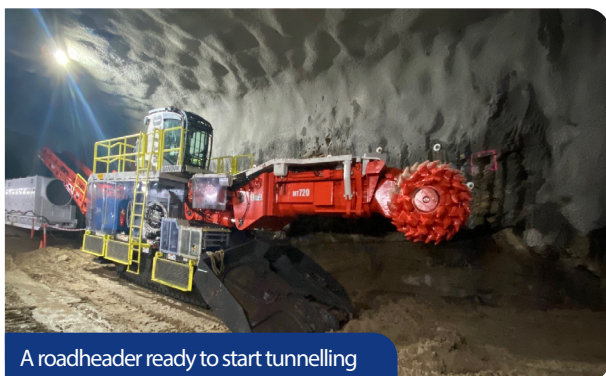
The average depth of the tunnels is 60 metres with the deepest point up to 91 metres deep.

Six roadheaders will initially be used to excavate the M6 Stage 1 tunnels. These machines are fitted with a large cutting head which will mine out the tunnels. As the project progresses, additional roadheaders will be added.

Tunnelling is a three stage process. Firstly, the roadheader excavates in one to five metre advances. This is followed by the installation of rock bolts to support the ground. These rock bolts can be up to 10 metres long. Finally, the tunnel roof and walls are sprayed with concrete to reinforce the tunnel.

Towards the end of the year tunnelling will also start from the TfNSW Depot site on West Botany Street and the Bicentennial Park Rockdale site.

An online tunnel tool which shows the location and depth of the tunnels can be found at nswroads.work/M6portal.



A roadheader ready to start tunnelling

Powering the tunnels

A new underground power line will be constructed to enable operation of key functions in the completed tunnels such as lighting, messaging signals and communications. This permanent power source will bring power from the Canterbury substation to the Motorway Operations Complex to be built on West Botany Street.

This underground power line is approximately nine kilometres long with construction of the power line starting later this year.

The work will comprise of trenching and laying conduits in some local streets and parks. The M6 Stage 1 team is working closely with local councils to confirm the cable route. The Community Engagement Team will be in touch with residents in these streets prior to any work taking place.

Protecting the environment

Work has also started at Bicentennial Park to establish construction and tunnelling sites.

The project has retained an environmental exclusion zone in the Park to protect the wetlands and retain and protect as many trees and vegetation as possible. Ecologists and environmental teams are employed to provide ongoing monitoring and care.

When construction is completed, Bicentennial Park will become a beautiful park land with various amenities for the community to enjoy.

The community will have further opportunities to comment on the design of the parkland during public exhibition of the Urban Design and Landscape Plan in 2023.

Excavation in the old landfill site

The earthworks at Bicentennial Park have the potential to disturb waste from what was previously a landfill site. As excavation work takes place, it is likely that pockets of leachate (water that has come into contact with the waste) will become exposed and emit odour. Whilst the odour may be unpleasant, it is not harmful and will not be widespread. The project will implement a number of mitigation measures to manage the odour and minimise the impact.



Trees retained in the environmental protection zone in Bicentennial Park

Completion of new community recreation facilities

The M6 Stage 1 is more than just a tunnel – it presents an opportunity to renew and revitalise local places while also taking thousands of cars and trucks off local streets.

Key to Transport for NSW's focus on making great places, new community recreation facilities have been completed at Ador Park Precinct and the new Brighton Memorial Playing Fields.

The new Brighton Memorial Playing Fields at Brighton-Le-Sands opened at the start of October 2021, providing a war memorial, all abilities playground, new FIFA-grade all weather playing field, amenities block and picnic areas.



Brighton Memorial Playing Fields

The new Ador Park Precinct opened to the public just before Christmas on 17 December 2021, in time for holiday fun. This state-of-the-art park precinct includes:

- huge all abilities playground complete with amenities, picnic area, nature play and scooting track
- custom designed skate park that can be used by skaters and scooters of all ages and stages
- FIFA-grade all weather playing field, pedestrian bridge over Muddy Creek and new amenities building with change rooms and canteen, and
- new off-street parking for over 60 cars

Take a digital tour of the new parks at <https://caportal.com.au/rms/m6/crf>.

All the new facilities have been handed over to Bayside Council to manage and promise many years of enjoyment for everyone.

Importantly, the new facilities were designed to reflect community feedback, which told Transport for NSW that multi-purpose parks and sporting fields were desperately needed to revitalise the area.

Completing all the facilities before the start of construction for M6 Stage 1 ensures the community has access to new, open spaces to offset the closure of other areas in Bicentennial Park for construction. This was also an important part of planning approval for the M6 Stage 1.



Ador Park Precinct

Providing safer pedestrian and bicycle paths

The M6 Stage 1 includes a shared cyclist and pedestrian pathway which will start at the existing cycleway at Muddy Creek, next to Bestic Street, Brighton-Le-Sands, and will continue south to Kogarah through Rockdale Bicentennial Park.

These new shared pathways will intersect with several existing and proposed east-west paths. A new shared cyclist and pedestrian bridge will also be built over President Avenue, linking to the Cook Park cycleway via the extended pathways through Scarborough Park North.

These shared pathways will also connect to existing active transport facilities and networks, promoting a healthy lifestyle for those who enjoy walking, jogging and cycling in the area. Get a sneak peek of our flythrough video by visiting the M6 Stage 1 interactive portal.

Meet the Community and Stakeholder Engagement team

The Community and Stakeholder Engagement teams from Transport for NSW and CGU are working together to support residents and businesses as work on the M6 Stage 1 progresses.

The teams are committed to engaging regularly with the community and welcome enquiries and feedback about how the teams are communicating with the community, residents and businesses. The community is welcome to contact the teams at any time on the contact details below.

During 2022 the team will be holding more forums to connect and update the community as well as some targeted face to face engagement activities where COVID-19 Guidelines permit.

How we will communicate with you about our work

The M6 Stage 1 project may cause disruption to the local community and businesses.

The project team will continue to inform the community in advance about work activities by regular updates distributed to letterboxes.

The team will provide updates by email or even SMS messages. Contact will only be made when the team need to inform you about the project, ways to have a say and construction activities. Let us know your thoughts by completing the latest community survey on the M6 Stage 1 interactive portal.

In the meantime, to stay informed on upcoming work, you are invited to subscribe to email updates by registering through the QR code below.

Scan me
to subscribe



Left to right: Soledad, Angus, Rachel, Nicholas, Josh, Emma, Gabriel, Natalie, Marion



Key dates you need to know over the coming months

- Start of construction along President Avenue and Princes Highway, Kogarah
- Start of tunnelling at Marsh Street, Arncliffe
- Progressively establishing the construction sites at Bicentennial Park
- Start of construction of tunnel shaft at Bicentennial Park

Contact us

If you have any questions or would like more information please contact our project team:



1800 789 297



info@M6Stage1.com.au



nswroads.work/M6portal



131 450

If you need help understanding this information, please contact the Translating and Interpreting Service on 131 450 and ask them to call us on 1800 789 297.